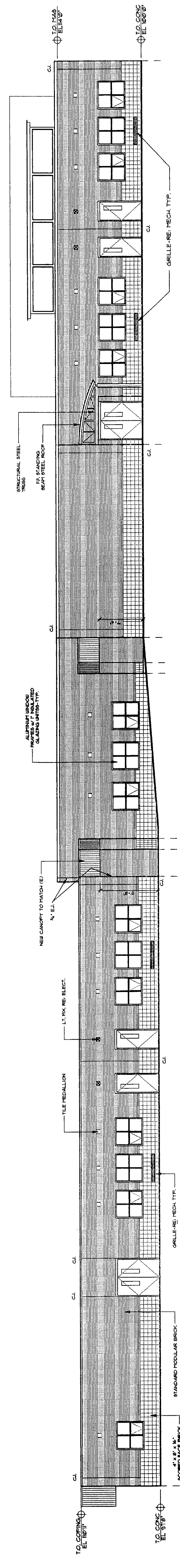


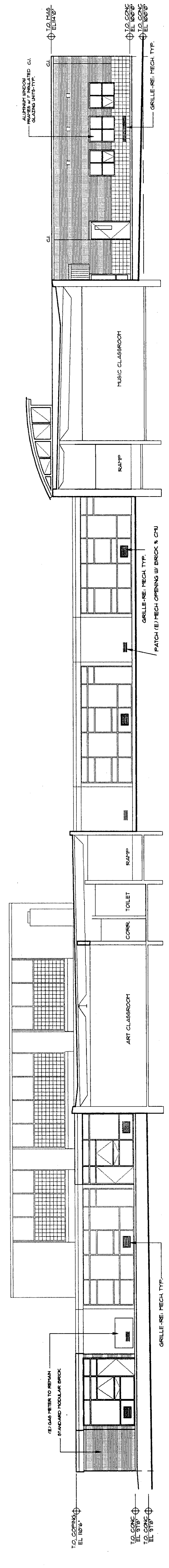
N1 NORTH ELEVATION

1/8"=1'-0"



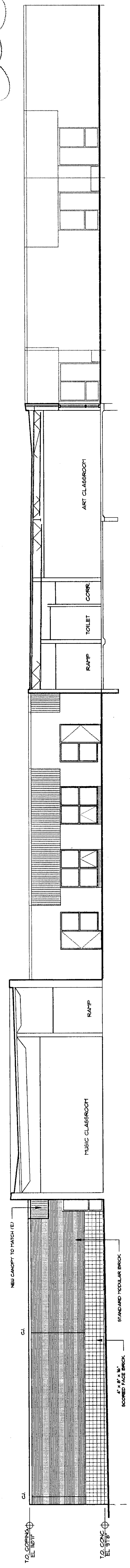
J1 EAST ELEVATION

1/8"=1'-0"



E1 SOUTH ELEVATION / NORTH POD

1/8"=1'-0"



A1 NORTH ELEVATION / SOUTH POD

1/8"=1'-0"

THIS RECORD DRAWING HAS BEEN PREPARED IN PART, BASED UPON INFORMATION FROM OTHERS. WHILE THIS INFORMATION IS BELIEVED TO BE CORRECT, THE DESIGN PROFESSIONAL CANNOT ASSURE ITS ACCURACY, AND THIS DRAWING IS TO BE USED ONLY AS A GUIDE. ANY ERRORS OR OMISSIONS WHICH MAY HAVE BEEN INCORPORATED INTO IT AS A RESULT OF THE DESIGN PROFESSIONAL'S REVIEW OF THE RECORD DRAWING AND ANY OTHER RECORD DOCUMENT ARE NOT TO BE CONSIDERED AS A VERIFICATION OF THE INFORMATION APPLIED TO IT FOR ANY PURPOSE.

JOB NUMBER 9113
 DRAWN DRK/C&B
 CHECKED GAB
 ISSUE 10/07/92
 REVISIONS
 AS BUILT'S
 SHEET NAME BUILDING ELEVATIONS
 SHEET NUMBER 4.1

POUDRE R-1 SCHOOL DISTRICT
 CACHE LA POUDE ELEMENTARY
 ADDITION & REMODEL
 FT. COLLINS, COLORADO

RBB
 RBB, Bremer, and Briggs, Inc.
 125 S. Brown - Suite 880
 Fort Collins, CO 80521